

# Typical Upgrade Cost Comparison

## Cost to Upgrade to Concrete Post-Frame Foundation from Treated Wood Post Foundation

### Concrete Pier Foundations

#### ← Perma-Column® Pre-Cast Concrete Post Upgrade

Upgrade cost per linear foot: \$10.60

Upgrade for 50x 104' Building: \$3,264.80

- About 10% more on a \$33,000 building
- About 6% more on a \$55,000 building
- About 3.5% more on a \$90,000 building

#### Cast-In-Place Pier Upgrade using Sturdi-Wall Plus® →

Upgrade cost per linear foot: \$12.15

Upgrade for 50x 104' Building: \$3,742.20

- About 11% more on a \$33,000 building
- About 7% more on a \$55,000 building
- About 4% more on a \$90,000 building

### Continuous Concrete Foundations

#### ← Perma-Columns® with 24" Insulated Grade Beam

Upgrade cost per linear foot: \$16.60

Upgrade for 50x 104' Building: \$5,112.80

- About 15% more on a \$33,000 building
- About 9% more on a \$55,000 building
- About 4% more on a \$90,000 building

#### Monolithic Slab with Insulation using → Sturdi-Wall® or Sturdi-Wall Plus®

Upgrade cost per linear foot: \$19.85

Upgrade for 50x 104' Building: \$6,113.80

- About 18% more on a \$33,000 building
- About 11% more on a \$55,000 building
- About 7% more on a \$90,000 building

#### ← Insulated Trenched Footing using Sturdi-Wall® or Sturdi-Wall Plus®

Upgrade cost per linear foot: \$20.25

Upgrade for 50x 104' Building: \$6,237.00

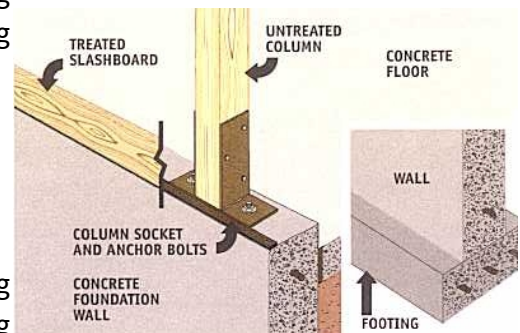
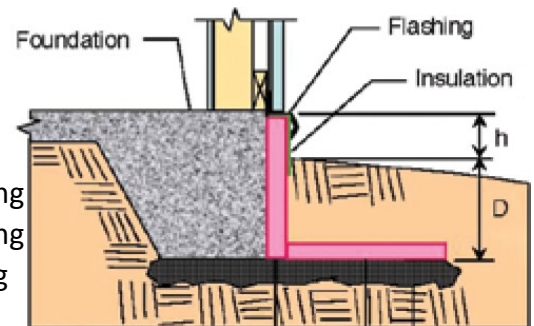
- About 19% more on a \$33,000 building
- About 11% more on a \$55,000 building
- About 7% more on a \$90,000 building

#### Formed Wall on Spread Footing\* using → Sturdi-Wall® or Sturdi-Wall Plus®

Upgrade cost per linear foot: \$42.70

Upgrade for 50x 104' Building: \$13,151.60

- About 40% more on a \$33,000 building
- About 24% more on a \$55,000 building
- About 15% more on a \$90,000 building



\*A "typical" frost wall foundation